

Number & Type of EAFs

Overall, the EAF melt shops surveyed are presently operating 68 EAFs. Forty-two EAF shops have a single EAF furnace and 19 have two EAF furnaces. Overall, there are 50 AC furnaces and 10 DC Furnaces. This result is summarized in Table 1.

Table 1
EAFs in Plants Surveyed

Type of Plant	1	2	AC	DC	?
Rebar & Structural LP (28)	21	7	24	3	1
High Quality LP (19)	12	7	17	2	
Flat Rolled (11)	7	4	6	5	
Other (3)	2	1	3		
Overall (61)	42	19	50	10	1

Heat Sizes

The EAF melt shops surveyed operate EAFs ranging in heat size from 35 to 220 tons. Overall, 53% (36) are rated 100 tons or more.

EAF Manufacturers

Overall, the EAF manufacturer that accounts for the largest share of the EAFs operated by the plants surveyed is Fuchs/VAI with a 28% share, followed by SMS/Demag with a 13% share, and Danieli with 11%¹. The share of the EAFs operated by the plants surveyed is summarized in Figure 10.

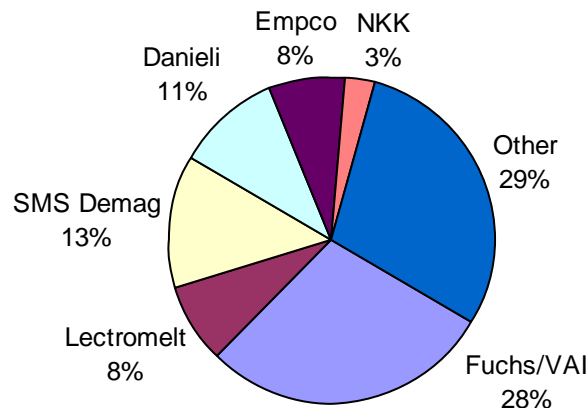


Figure 10 - Manufacturers' Share of EAFs in Melt Shops Surveyed

By Type of Plant – Fuchs/VAI accounted for the largest share of the EAFs operated by the Rebar & Structural Long Products and Flat Rolled Products plants surveyed, with a 34% and 44% share, respectively. Lectromelt had the largest share of the Higher Quality Long Products EAF shops. The share of the EAFs operated by the plants surveyed by type of plant is summarized in Figure 11.

¹ VAI acquired Fuchs, so we have added data for both.

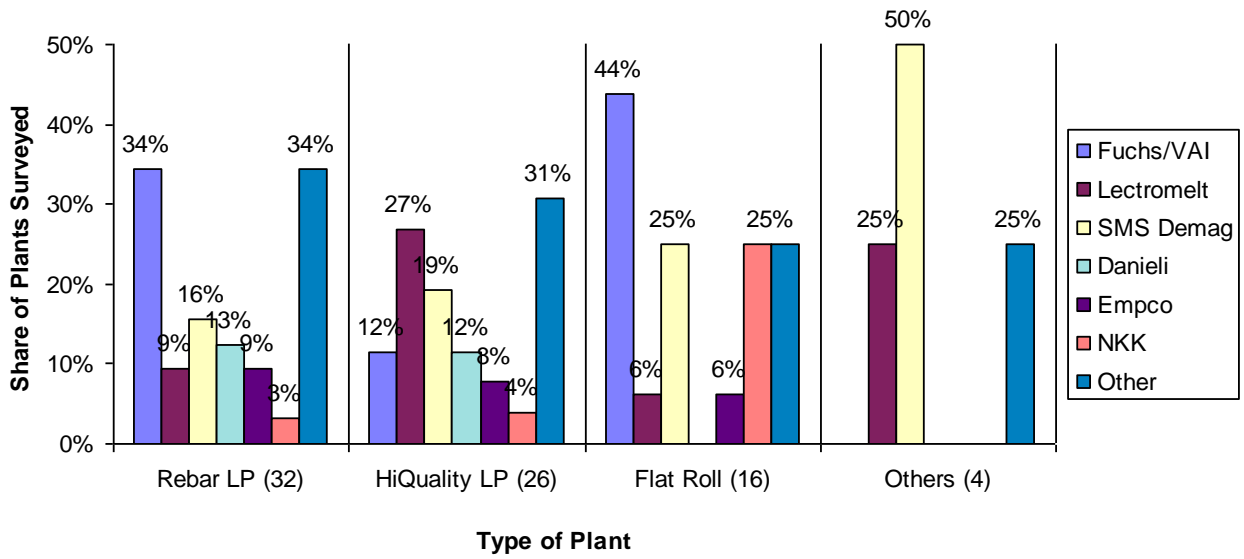


Figure 11 - Manufacturers of EAFs Installed in Plants Surveyed